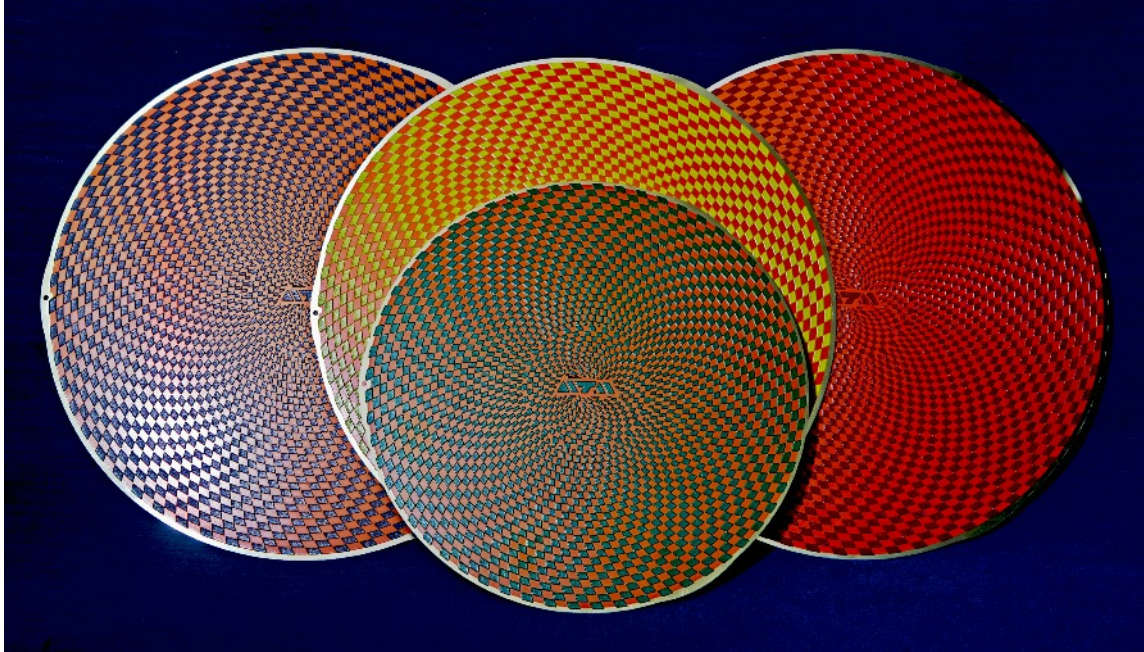




## Galaxy Rigid Diamond Grinding Discs



Galaxy rigid Diamond Grinding Discs are designed for the primary and fine grinding stages particularly in ferrous and super alloy applications. An efficient & economic alternative to the grinding stages often carried out by the use of Silicon Carbide abrasive papers.

Galaxy Rigid discs complete with metal backing to attach directly to a magnetic base.

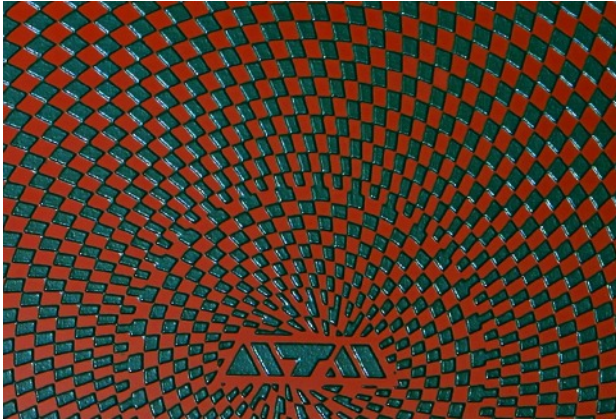
Grit Size		200 mm Galaxy R	250 mm Galaxy R	300 mm Galaxy R
P 80 - 100	Red	9500 5521	9500 4310	9500 4314
P 300 - 320	Green	9500 5522	9500 4311	9500 4315
P 500 - 600	Blue	9500 5523	9500 4312	9500 4316
P 1000 - 1200	Yellow	9500 5524	9500 4313	9500 4317

MetPrep Technical Bulletin 0035- 2016. For further information please contact [sales@metprep.co.uk](mailto:sales@metprep.co.uk)

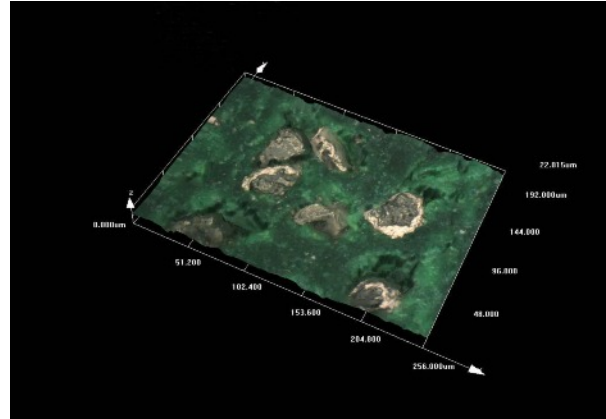
MetPrep Ltd - Curriers Close, Charter Avenue, Coventry, CV4 8AW - 02476 421222



## Galaxy Rigid Diamond Grinding Discs



Galaxy rigid Surface detail



Diamond abrasive in Galaxy surface 3D

Galaxy rigid P80 - P100 Red and P120 - P150 Green diamond grinding are to be used for their high stock removal capacity on hard materials such as steel, superalloys and titanium alloys. They are particularly useful for the preparation of large samples where speed is of the essence and a stone grinder is not available.

Galaxy rigid P300 - P320 and P500 - P600 diamond grinding discs are designed for use where samples require a typical primary grind only. Thus when sectioning damage needs removing or for planarity when centrally loaded specimen holders are used.

Galaxy rigid P1000 - P1200 diamond discs are employed either as a further grinding stage where other grinding consumables wear away too regularly and thus reduces consumable changing operations and time at the machine. It can also be used for primary grinding if damage is required to be kept as a minimum and material can be removed at a slower consistent rate.

Water is employed as a lubricant in general but for samples susceptible to attack by water an oil can be used.

Galaxy rigid diamond grinding discs can require regular dressing. Dressing periods will vary dependent on the amount, size & hardness of the specimen.

To dress the Galaxy rigid diamond, disc first place the disc on the platen and rotate it at 150 rpm with copious amounts of water. Using moderate pressure apply the correct dressing stick manually to the centre of the disc and move it slowly to the edge.

MetPrep Technical Bulletin 0035 - 2016. For further information please contact [sales@metprep.co.uk](mailto:sales@metprep.co.uk)

MetPrep Ltd - Curriers Close, Charter Avenue, Coventry, CV4 8AW - 02476 421222