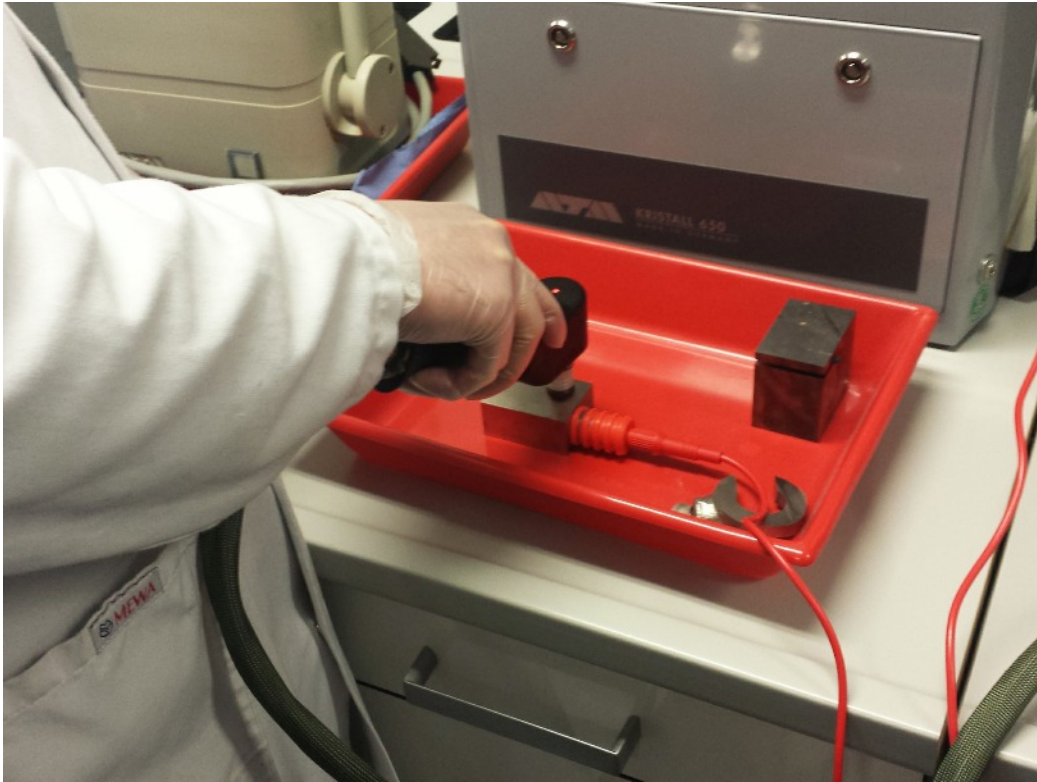
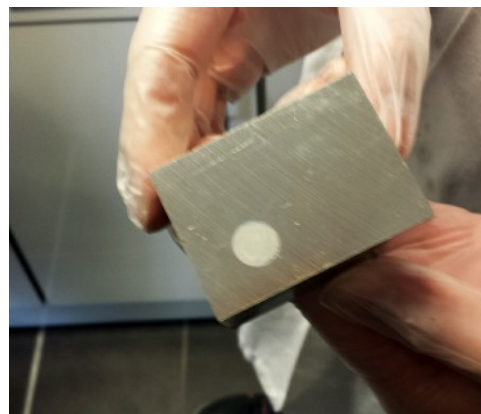




## Krystall 650 - Mobile Electrolytic Polisher Etcher Unit



The KRISTALL 650 is a mobile battery powered electrolytic polisher and etcher ideal for both bench top & 'on site' applications. A self contained unit powered by a Lithium battery which allows for typically 150 polishing cycles. Simple to operate with a clear LED display.



The self contained unit comes complete with all accessories to prepare a polished region on your sample

MetPrep Technical Bulletin 0050 - 2016. For further information please contact [sales@metprep.co.uk](mailto:sales@metprep.co.uk)

MetPrep Ltd - Curriers Close, Charter Avenue, Coventry, CV4 8AW - 02476 421222